



BioClock III Ethernet Installation Instructions

Description

Figure 1 shows how all of the system components are connected on an Ethernet Terminal setup. (Note: Figures are not to scale).

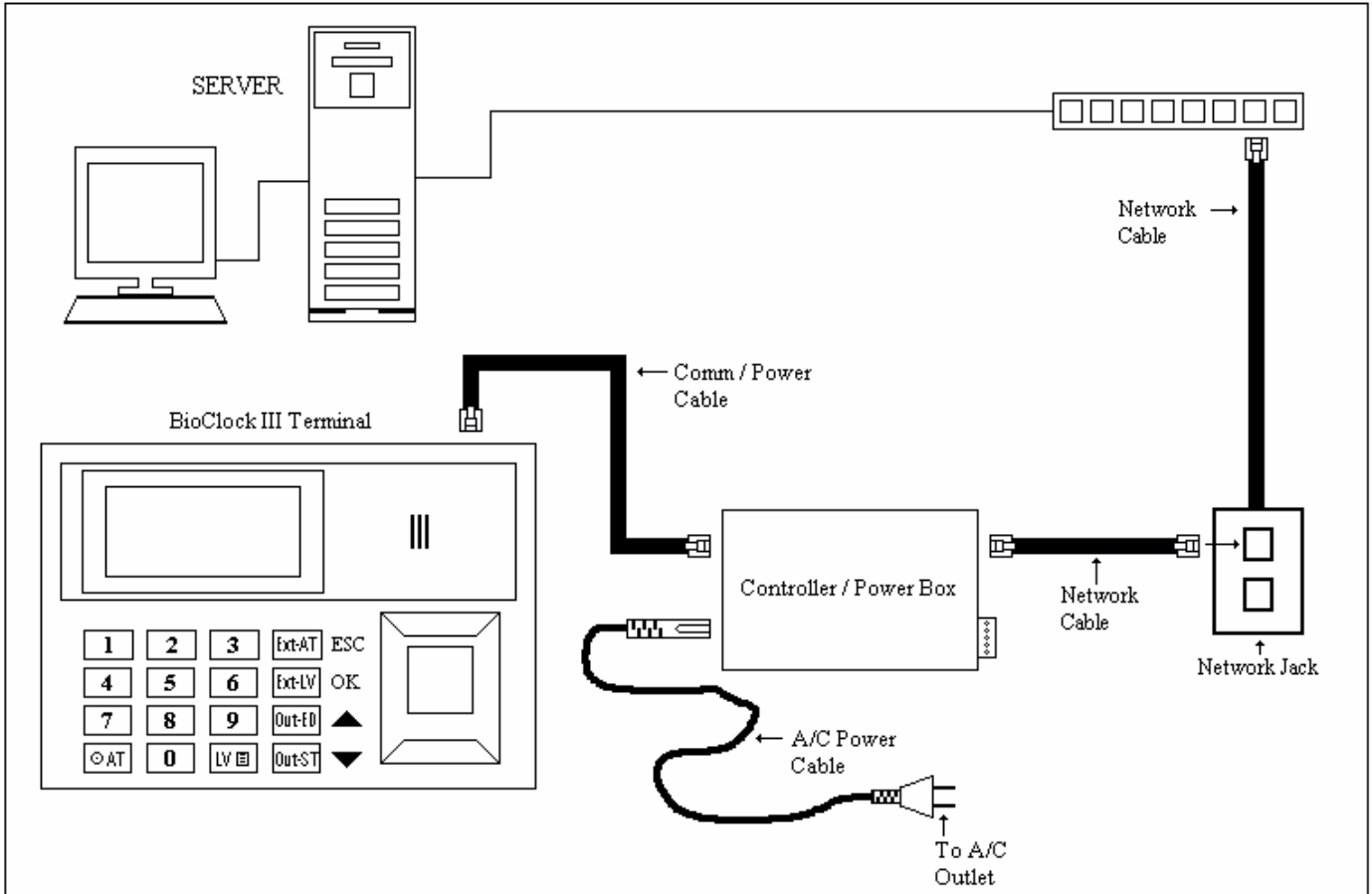


Figure 1

Installing the Terminal

- As you install the system, refer to Figure 1 in addition to the other figures mentioned below.

STEP 1

Determine a mounting site for the Terminal. A Network jack and cable should be installed next to where the Controller / Power Box will be mounted. Also, a 120 VAC outlet should be located within 5 feet of the Controller / Power Box.

STEP 2

The Terminal can be attached to any flat surface that is in good condition. Care should be taken to place it in a location where the Terminal will not be bumped. The base of the Terminal should be about 4 ½ feet (54 inches) from the surface of the floor in an area where strong bright light and sunshine will not cause glare on the Terminal's display or be shone directly on the optical platen.

STEP 3

Use the dimensions on Figure 2 to mark the wall for the locations of the screws. Prepare the wall (if necessary); for example, drill pilot holes or tap holes. Use appropriate screws and anchors and mount the Terminal over the screws to secure it in place. **Remember, the view shown in Figure 2 is the back of the Terminal and make sure the measurements are marked correctly on the wall when viewing the Terminal from the front side.**

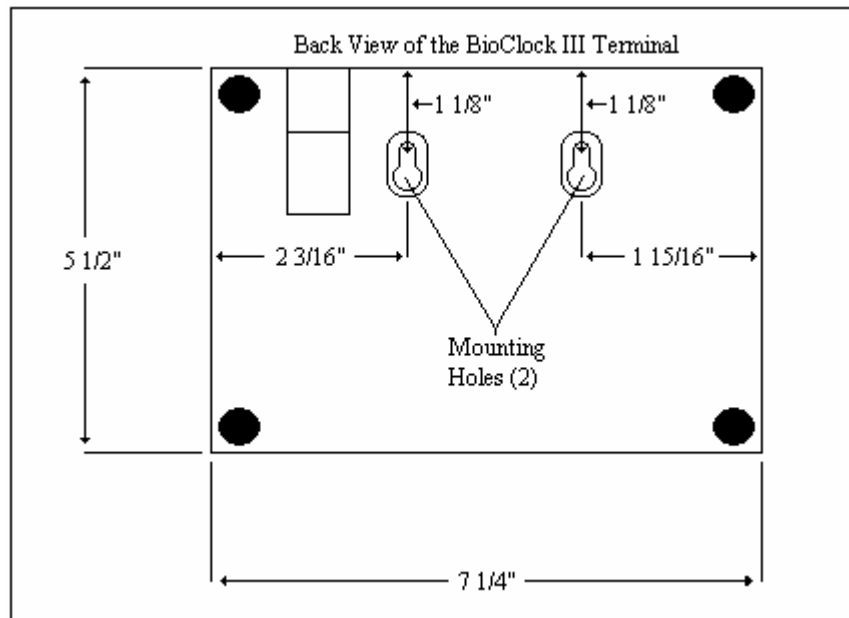


Figure 2

STEP 4

Connect one end of the 8 conductor Comm / Power cable (Category 5 cable) into the RJ-45 Modular Jack on the Terminal (Figure 3).

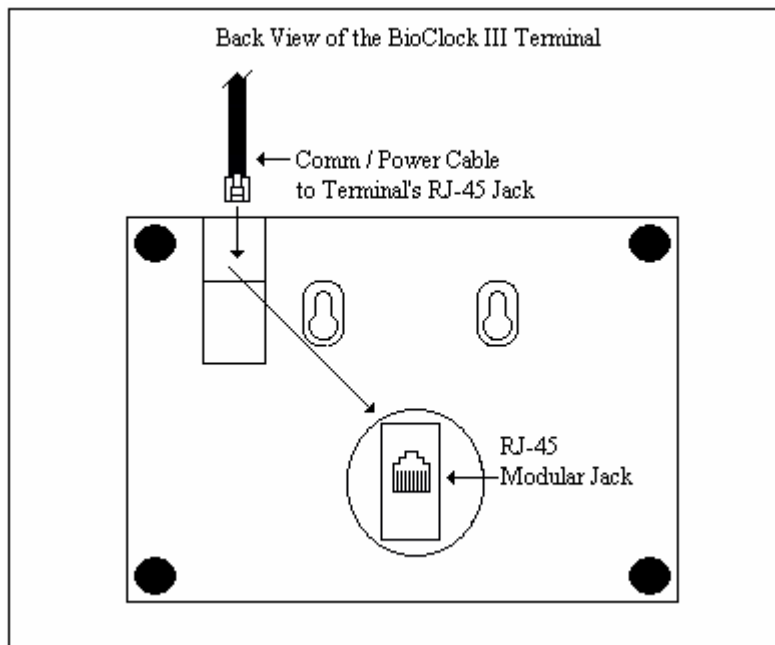


Figure 3

STEP 5

Make sure that the Mode Switch is set to the TCP / IP position (Figure 4). Plug the other end of the Comm / Power Cable into the Device Modular Jack on the Controller / Power Box. Plug one end of the Network Cable into the TCP / IP Modular Jack and the other end into the Network Jack (Figure 4). Plug the A/C Plug into the Power Supply Connector on the Controller / Power Box and the other end into the A/C outlet (Figure 4).

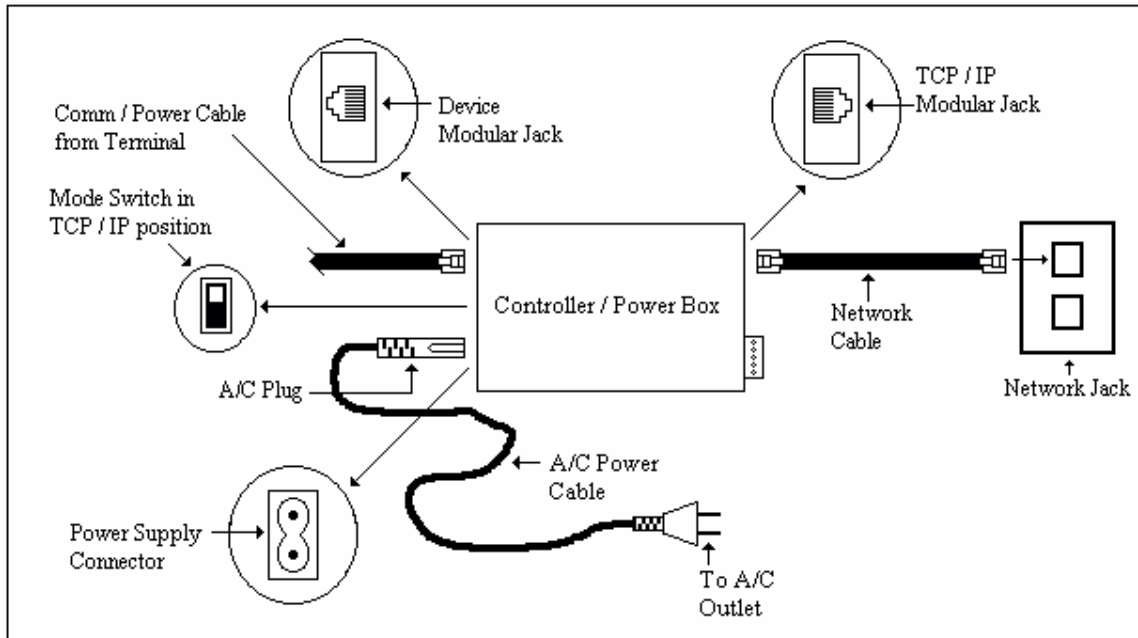


Figure 4

STEP 6

The Terminal will power up and the date and time will be on the display. If the Terminal does not power up, press the [Ⓞ AT] key on the Terminal's keypad.

STEP 7

Note: The Terminal must have a static IP Address assigned to it. The default port number for the Terminal is 4370 and needs to be entered into the Software's TCP/IP tab in the Clock Setup along with the static IP Address that was assigned to the Terminal.

To start the setup process, press the [LV] (menu) key on the keypad and hold it down for 3 seconds. The top line of the display may read "Admin Affirm" (if no Admin users have been enrolled yet, you will not be prompted for Admin verification and will go directly to the main menu (Figure 5)). If "Admin Affirm" is prompted on the display, then either type your PIN (ID) number and touch the sensor or just touch the sensor for verification. The main menu will be displayed (Figure 5). Press the [Down arrow] key on the keypad until the arrow points to the Options selection (Figure 6). Press the [OK] key on the keypad and the following will prompt on the display (Figure 7).

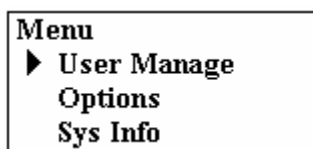


Figure 5

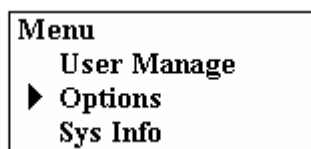


Figure 6

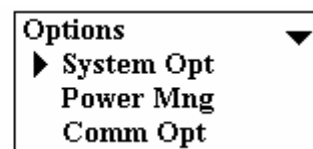


Figure 7

STEP 8

Press the [Down arrow] key on the keypad until the arrow points to the Comm Opt option (Figure 8). Press the [OK] key on the keypad and the following will prompt on the display (Figure 9).

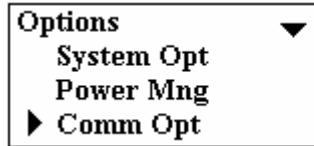


Figure 8

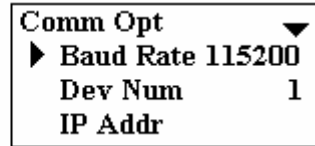


Figure 9

STEP 9

Press the [Down arrow] key on the keypad until the arrow points to the Dev Num option (Figure 10). The default Dev Num is 1. If it is not set to 1, then press the [OK] key on the keypad and then press the number [1] key. Press the [OK] key on the keypad to select the setting.

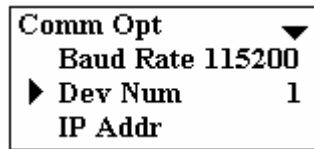


Figure 10

STEP 10

Press the [Down arrow] key on the keypad until the arrow points to the IP Addr option (Figure 11). Press the [OK] key on the keypad and the following default IP Address will prompt on the display (Figure 12). Using the number keys on the keypad type in static IP Address for the Terminal. After each octet press the [Down arrow] key on the keypad to move to the next octet to the right (pressing the [Up arrow] key moves the highlight box to the left). After typing in the IP Address press the [OK] key on the keypad to select the setting.

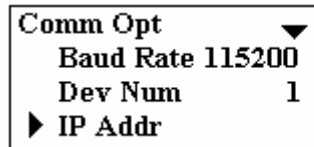


Figure 11

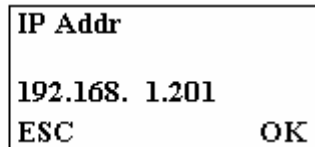


Figure 12

STEP 11

Press the [Down arrow] key on the keypad until the arrow points to the Net Speed option (Figure 13). 10M-F is the default setting. Press the [OK] key on the keypad then press the [Down arrow] key until the selection reads AUTO (Figure 14). Press the [OK] key on the keypad to select the setting.

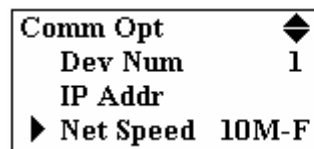


Figure 13

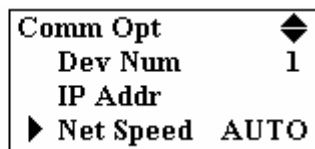


Figure 14

STEP 12

Press the [Down arrow] key on the keypad until the arrow points to the Ethernet option (Figure 15). Press the [OK] key on the keypad. If the setting is set to Y then press the [OK] key on the keypad to select the setting. If not, press the [Down arrow] key until it reads Y, then press the [OK] key.

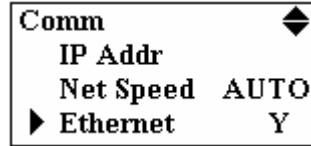


Figure 15

STEP 13

Press the [ESC] key on the keypad and the following will prompt on the display (Figure 16). Press the [OK] key on the keypad to save all the new settings. Completely exit out of the menus by pressing the [ESC] key until the date and time is displayed.

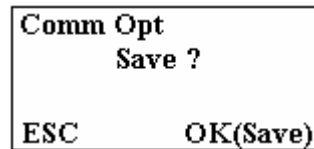


Figure 16

STEP 14

Power the Terminal off by pressing and holding down the [⊙ AT] key on the keypad for a few seconds until the Terminal powers down. Wait 5 seconds and press the [⊙ AT] key again to power the Terminal back up. This needs to be done so that all the new settings will take effect.

* This completes the Ethernet Installation of the BioClock III Terminal. The rest of the Terminal programming will be done on the PC in the Time & Attendance software.