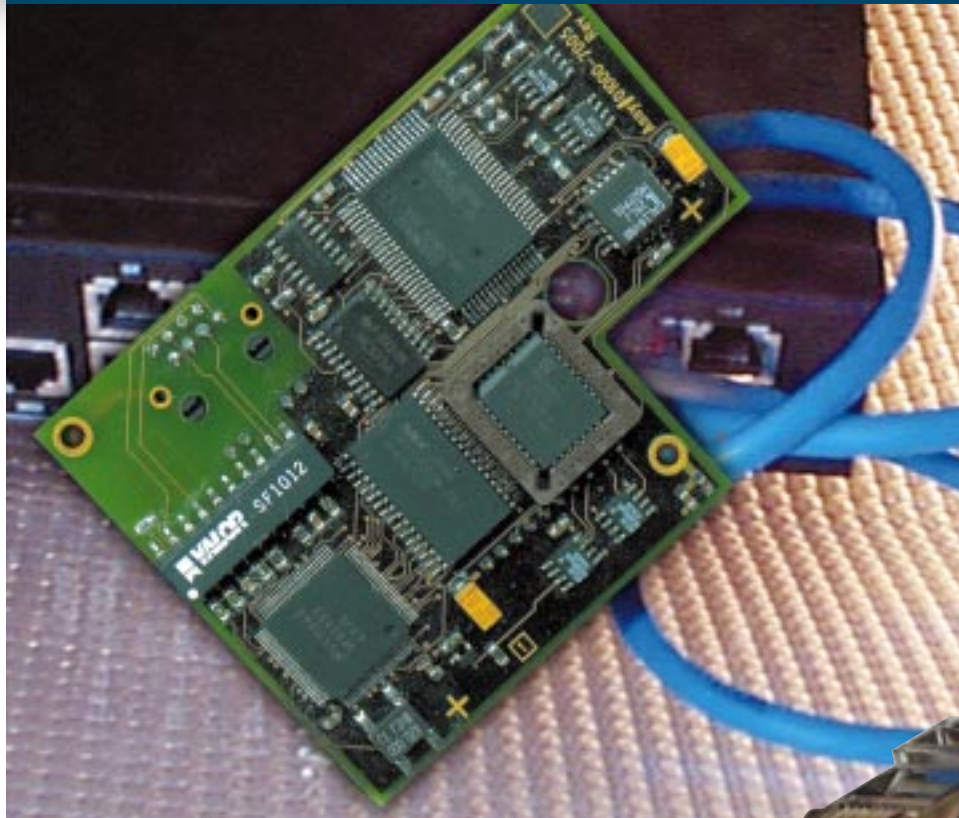


ETHERNET



Ethernet Communications Option

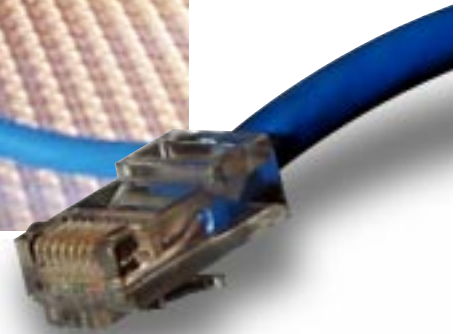
- ▶ *Reduce Communications Costs*
- ▶ *Reduce Installation Costs*
- ▶ *Simple Setup*
- ▶ *Standard TCP/IP Network Protocol*

The EN-100 internal Ethernet module allows RSI's HandKey and HandPunch terminals to communicate to a host computer over a Ethernet Local Area Network via TCP/IP. This can greatly reduce installation and communications costs by taking advantage of a company's existing data network. Installation is further simplified because the module is completely internal to our biometric terminals. This eliminates the need for an additional power supply and reduces mounting considerations.

Set up is fast and simple. A RJ 45 connector is used to connect to 10Base-T network wiring. The IP address and gateway are set via the terminal's set-up menu and keypad. Even the appropriate subnet mask is automatically generated for the selected IP address. No special set-up programs are required at the host.

Networking flexibility is maximized since multiple hand readers may still be daisy chained via RS-485 to a terminal using the Ethernet module. This allows for a remote location with up to 32 terminals to communicate to the host via a single Ethernet connection.

Applications support for the Ethernet module is available for both Windows 95 and Windows NT environments (32 bit) through RSI's communications API Version 2.20 or higher.



Network Interface:	10 Base-T (RJ 45)
Network Protocol:	TCP/IP
IP Address:	Set at terminal
TCP Port Number :	3001
Subnet Mask:	Automatically generated for selected IP address
Power Consumption:	200mA max increased current draw from terminal @ 12VDC
Part Number:	EN-100



1520 Dell Avenue
Campbell, California 95008 USA
Tel: 408.364.6960
Fax: 408.370.3679
Email: sales@Recogsys.com
Website: www.recogsys.com

